



Century Academy and Independent Study Program



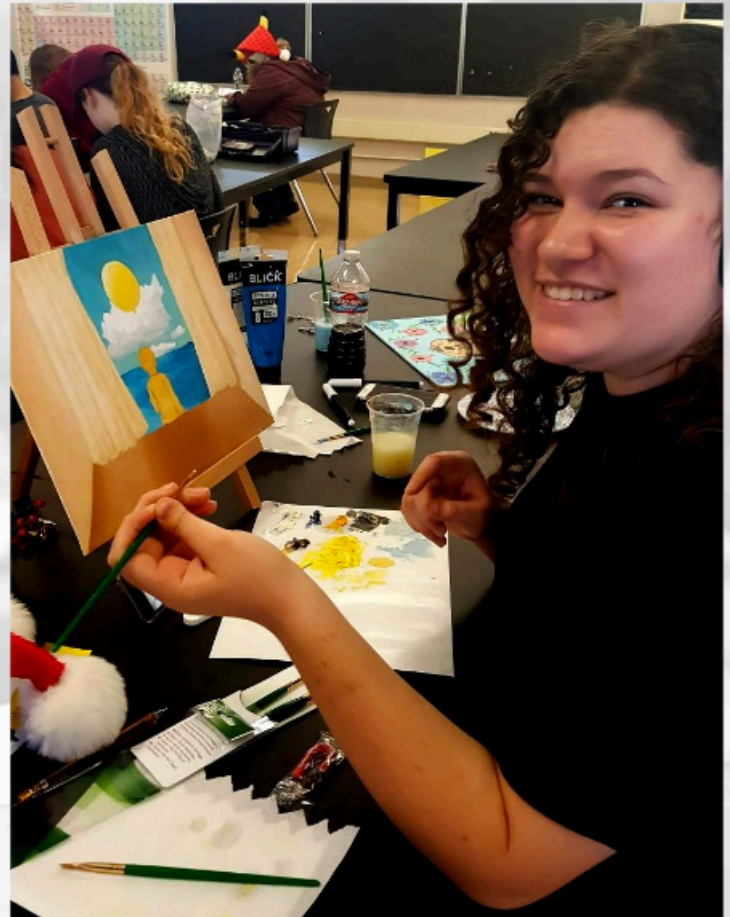
Purpose of the Presentation

- Update the status of repairs of Century classrooms
- Discuss options on whether or not to move Century Academy and Independent study back to Waverly Campus
- Give the Board of Education and the public an opportunity to provide input



Current Century Academy

- *Online curriculum*
- *Advisory*
- Expanded on-ground course work
- School Community and Culture Development
- Social-emotional supports
- Serving grades 6-12



Century Academy and Independent Study Program

- Current home is at Waverly site
 - Utilizing seven portable classrooms and two interior rooms
 - Sharing site with adult education, UCP, and Post-secondary education program
- Due to mold remediation, temporarily relocated to Horizon Hills
 - Former office space for Breakthrough, current SPED offices
 - Sharing site with adult education parent program and Breakthrough
 - Required temporary bathrooms and storage



Century Update

- All repairs are complete
 - HVAC work, HEPA filtering, remove and replacement of affected areas, air scrub the areas at least 24 hours
 - Final tests to be completed this week
- Work on gutters and down spouts to control water run-off will happen during the summer



Future of Century

1. Return to Waverly campus
2. Remain at Horizon Hills
3. Find alternate location
 1. District offices
 2. Other District sites
4. Other?



Return to Waverly Campus

- Continue to share campus with other programs
- Security challenges
- Co-mingling students and adults
- Sharing restrooms with adults
- Limited growth
- Most dedicated spaces are in portable classrooms
- Estimated cost = moving costs



Remain at Horizon Hills

- Relocation of SPED staff
- Requires installation of permanent restrooms
- Growth potential
- Potential to build an identity
- Permanent classrooms
- DSA certified as a school
- Removal of portables from Waverly Campus
- Cost = \$60k moving/misc + site modernization and updates (Measure I)



Considerations

1. What is best for students and the learning environment
2. Can we find a suitable long-term home
3. Can we re-unite special education department with instruction
4. Can we take advantage of under-utilized spaces

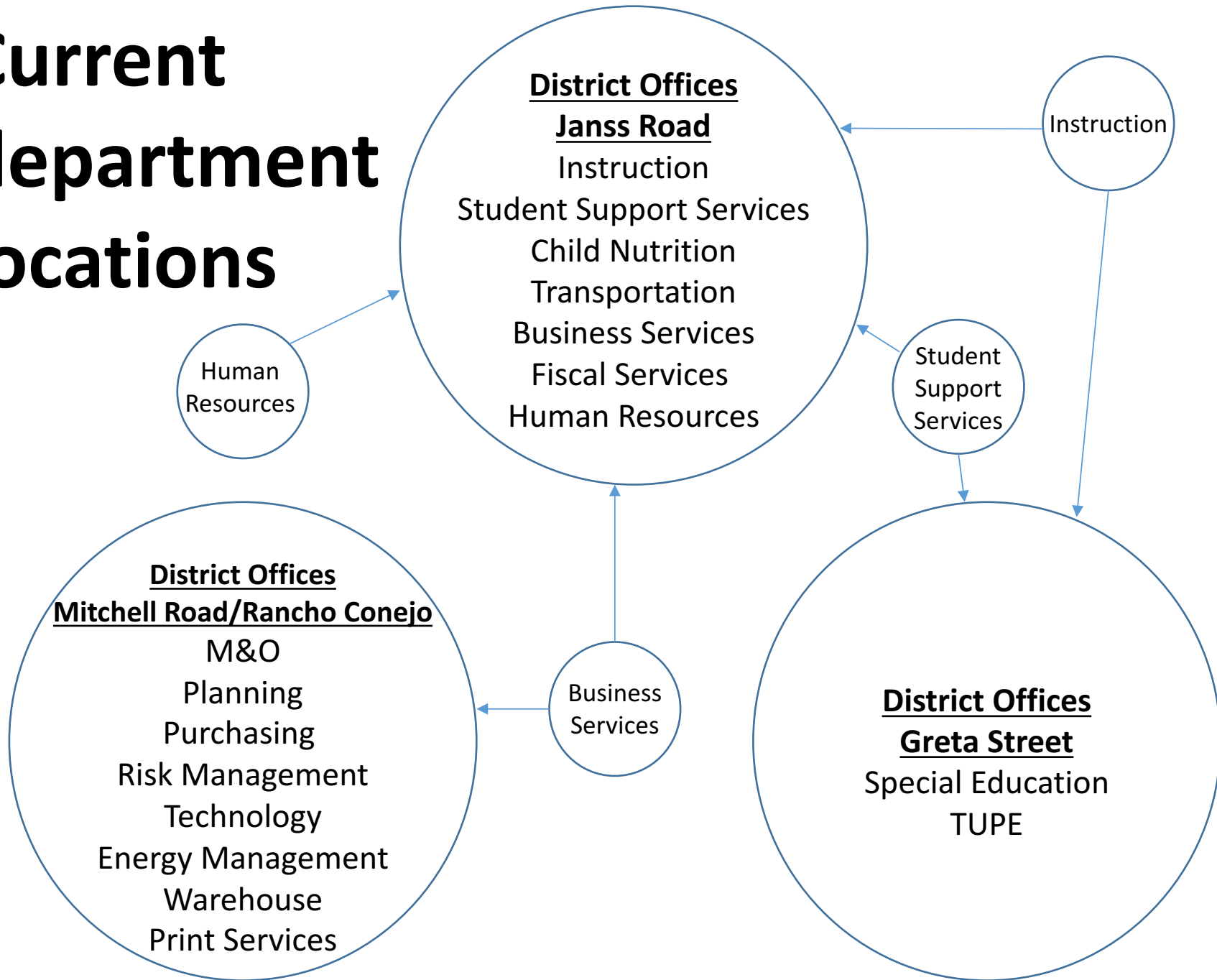


To Establish Century Academy on the Horizon Hills Campus

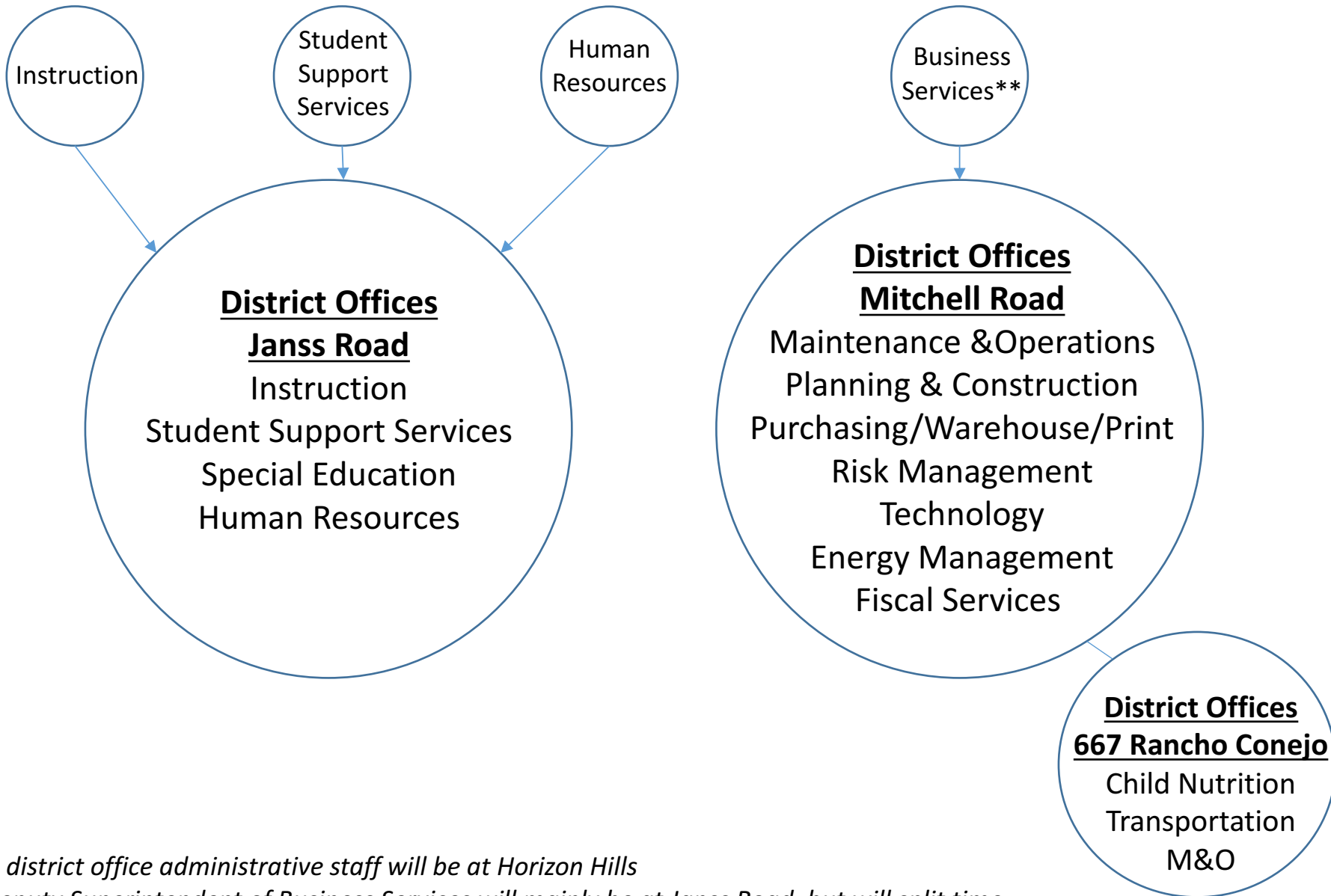
- Relocate Special Education department to Janss Road
 - Re-unites SPED with Instruction and Asst. Supt. of Student Support Services
- Remove portables at Waverly
 - Reduce footprint and traffic in Waverly community
- Relocate Child Nutrition and Transportation to 667 Rancho Conejo Road
 - Customer oriented facility
 - Easy parking for parents
- Relocate Fiscal Services to 750 Mitchell
 - Payroll and HR would be separated
 - Parking challenges at Mitchell Road
- *Other miscellaneous related moves necessary*
- *Moves all of business services to one location*
- *Makes better use of 667 Rancho Conejo and 750 Mitchell*



Current department locations



Proposed locations*



**No district office administrative staff will be at Horizon Hills*

***Deputy Superintendent of Business Services will mainly be at Janss Road, but will split time*



Discussion

